

**PROPRIETARY INFORMATION**  
 THE INFORMATION HEREIN IS PRIVILEGED AND CONFIDENTIAL AND SHALL NOT BE DISSEMINATED, DUPLICATED, REUSED, OR DISCLOSED IN ANY WAY WITHOUT THE PRIOR WRITTEN PERMISSION OF INNOVIATOR, LLC.

REVISIONS					
REV	ZN	DESCRIPTION	DRAWN	APPROVED	DATE
IR	ALL SHTS	INITIAL RELEASE	R. SEEHAUSEN	Z. KAUFMAN	04/30/2021

**NOTES:**

- THIS DRAWING HAS BEEN GENERATED AND MUST BE MAINTAINED BY A 3D CAD SYSTEM. CHANGES SHALL BE INCORPORATED AS DIRECTED BY THE DESIGN ACTIVITY. THE MODEL SHALL BE KEPT CURRENT WITH THE DRAWING AT ALL TIMES
- INTERPRET DIMENSIONS AND TOLERANCES PER ASME Y14.5-2018
- SOME DETAILS OMITTED FOR CLARITY
- REMOVE ALL SHARP BURRS, CORNERS, AND SHARP EDGES 0.015 RAD OR CHAMFER UNLESS OTHERWISE NOTED
- RESTORE FINISHES AND CORROSION INHIBITING COMPOUND PER BEECHCRAFT MM 20-08-00. UNLESS OTHERWISE SPECIFIED:
- PERMISSIBLE TO ADJUST FASTENER LENGTH ± 2 SIZES
  - HOLE PREPARATION PER BEECHCRAFT SIRM 20-50-00.
  - WET INSTALL PERMANENT FASTENERS WITH SEALANT PER BEECHCRAFT SIRM 20-50-00.
  - LOCATION AND INSTALLATION OF ALL FASTENERS ARE TO HAVE A MIN. EDGE DISTANCE OF 2X FASTENER DIAMETER AND A MIN. CTR TO CTR DISTANCE OF 4X FASTENER DIAMETER
  - TORQUE THREADED FASTENERS PER BEECHCRAFT MM 20-01-00-101 OR AC43.13B CHAPTER 7
  - COUNTERSINK FASTENERS PER SIRM 20-50-02.
  - SEAL FAYING SURFACES AND FILLET (EDGE) SEAL PER BEECHCRAFT SIRM 20-10-08.
- SURFACE FINISH OF CUTOUTS SHALL BE 63-MICROINCHES OR BETTER.
- HIGH FREQUENCY EDDY CURRENT INSPECT CUTOUTS AND EXISTING FASTENER HOLES FOR CRACKS PRIOR TO FINAL INSTALLATION PER BEECHCRAFT SIRM 20-00-00. ANY CRACK INDICATION IS NOT ACCEPTABLE.

[9] EXACT WINGTIP STRUCTURE SHAPE AND DIMENSIONS MAY VARY BETWEEN AIRCRAFT.

[10] PICK UP EXISTING SCREW HOLES IN WINGTIP STRUCTURE.

[11] COORDINATE LOCATION WITH GAL01-5100-401-001 / GAL01-5100-401-002 BRACKET LOCATION.

[12] REFERENCE WHELEN AEROSPACE TECHNOLOGIES OR650E INSTALLATION GUIDE.

[13] -001 / -002 WEIGHT IS 0.788 EACH  
 -003 / -004 WEIGHT IS 0.434 EACH

[14] REFERENCE WHELEN AEROSPACE TECHNOLOGIES 71125 SERIES INSTALLATION GUIDE.

[15] PART OF 01-0790701-01 / 01-0790701-02 ASSY.

[16] -001/-002 INSTALLATIONS ONLY.


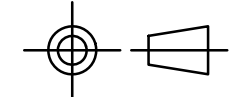
[17] SIX DEGREE ANGLE MAINTAINS OEM POSITION LIGHT ORIENTATION IN-PLANE WITH AIRCRAFT GLOBAL XZ PLANE. ANGLE OFFSETS WING SIX DEGREE DIHEDRAL.

[18] REMOVE 4X 14-0050505-14 SCREWS AND LIGHT BODY TO ISOLATE BASEPLATE FOR INDICATED INSTALLATION.

[18] INSTALL HARDWARE WITH LOCTITE BLUE THREAD LOCK OR EQUIVALENT. INSTALL PER MANUFACTURERS INSTRUCTIONS.

SEE SHEET 2 FOR PARTS LIST

-004	1	1	GAL01-5720-001	BARON / BONANZA / TWIN BONANZA
-003	1	1	GAL01-5720-001	BARON / BONANZA / TWIN BONANZA
-002	1	1	GAL01-5720-001	BARON / BONANZA / TWIN BONANZA
-001	1	1	GAL01-5720-001	BARON / BONANZA / TWIN BONANZA
PART DASH NO.	NHA	TOTAL	NEXT ASSY	USED ON
APPLICATION				

UNLESS OTHERWISE SPECIFIED DIMENSIONS ARE IN INCHES TOLERANCES ARE:		SOLIDWORKS DRAWING			
DECIMAL .X ± 0.1 .XX ± 0.03 .XXX ± 0.010	ANGULAR ±0.50° SURFACE FINISH 125	APPROVAL (SIGNATURE ON FILE)	DATE		
THIRD ANGLE PROJECTION		3D MODEL: R. SEEHAUSEN	04/30/2021		
		DRAWN: R. SEEHAUSEN	04/30/2021		
		CHECKED: Z. KAUFMAN	04/30/2021		
DO NOT SCALE DRAWING		STRESS: R. SEEHAUSEN	04/30/2021		
		APPROVED: Z. KAUFMAN	04/30/2021		


D  
C  
B  
A

D  
C  
B  
A

**PROPRIETARY INFORMATION**  
 THE INFORMATION HEREIN IS PRIVILEGED AND CONFIDENTIAL AND SHALL NOT BE DISSEMINATED, DUPLICATED, REUSED, OR DISCLOSED IN ANY WAY WITHOUT THE PRIOR WRITTEN PERMISSION OF INNOVIATOR, LLC.

REVISIONS					
REV	ZN	DESCRIPTION	DRAWN	APPROVED	DATE

QTY	QTY	QTY	QTY	CAGE	PART NUMBER	NOMEN OR DESCRIPTION	MATERIAL & SPECIFICATION	NOTES	WEIGHT IN LBS	ZONE	CNF
		2	2		MS35206-212	SCREW		19	0.005		
		2	2		MS35206-225	SCREW		19	0.005		
6	6	6	6		MS27039-0805	SCREW			0.005		
2	2	2	2		CR3213-4-02	BLIND RIVET			0.001		
		4	4		MS20470AD4-5	RIVET			0.001		
10	10	10	10		NAS1097AD3-4	RIVET			0.001		
2	2	2	2		MS21073L08K	NUTPLATE			0.002		
3	3	3	3		MS21075L06	NUTPLATE			0.002		
		2	2		NAS1149GN432P	WASHER			0.001		
		2	2		NAS1149GN632P	WASHER			0.001		
6	6	6	6		NAS1149GN832P	WASHER			0.001		
3	3	3	3		MS24693-26	SCREW			0.001		
		(1)	(1)		01-0771125-12	RECOGNITION LIGHT			0.3	0406D	
		(1)	(1)		01-0790701-02	ANTI-COLLISION LIGHT ASSY, RED			0.27	0408B	
(1)		(1)			01-0790701-01	ANTI-COLLISION LIGHT ASSY, GREEN			0.27	0408B	
		1	1		GAL01-5100-401-007	RECOGNITION LIGHT BRACKET			0.03	0405B	
1		1			GAL01-5100-401-006	BRACKET SUPPORT CLIP, RH SIDE			0.01	0504C	
	1		1		GAL01-5100-401-005	BRACKET SUPPORT CLIP, LH SIDE			0.01	0504C	
1	1	1	1		GAL01-5100-401-003	AFT ATTACH CLIP			0.004	0506C	
1		1			GAL01-5100-401-002	LIGHTING BRACKET, RH SIDE			0.083	0407D	
	1		1		GAL01-5100-401-001	LIGHTING BRACKET, LH SIDE			0.083	0407D	
-					-004	RH POSITION/ANTICOLLISION LIGHT PROVISIONS INSTL				0305A	
	-				-003	LH POSITION/ANTICOLLISION LIGHT PROVISIONS INSTL				0305A	
		-			-002	RH POSITION/ANTICOLLISION AND RECOGNITION LIGHT PROVISIONS INSTL				0307A	
			-		-001	LH POSITION/ANTICOLLISION AND RECOGNITION LIGHT PROVISIONS INSTL				0307A	

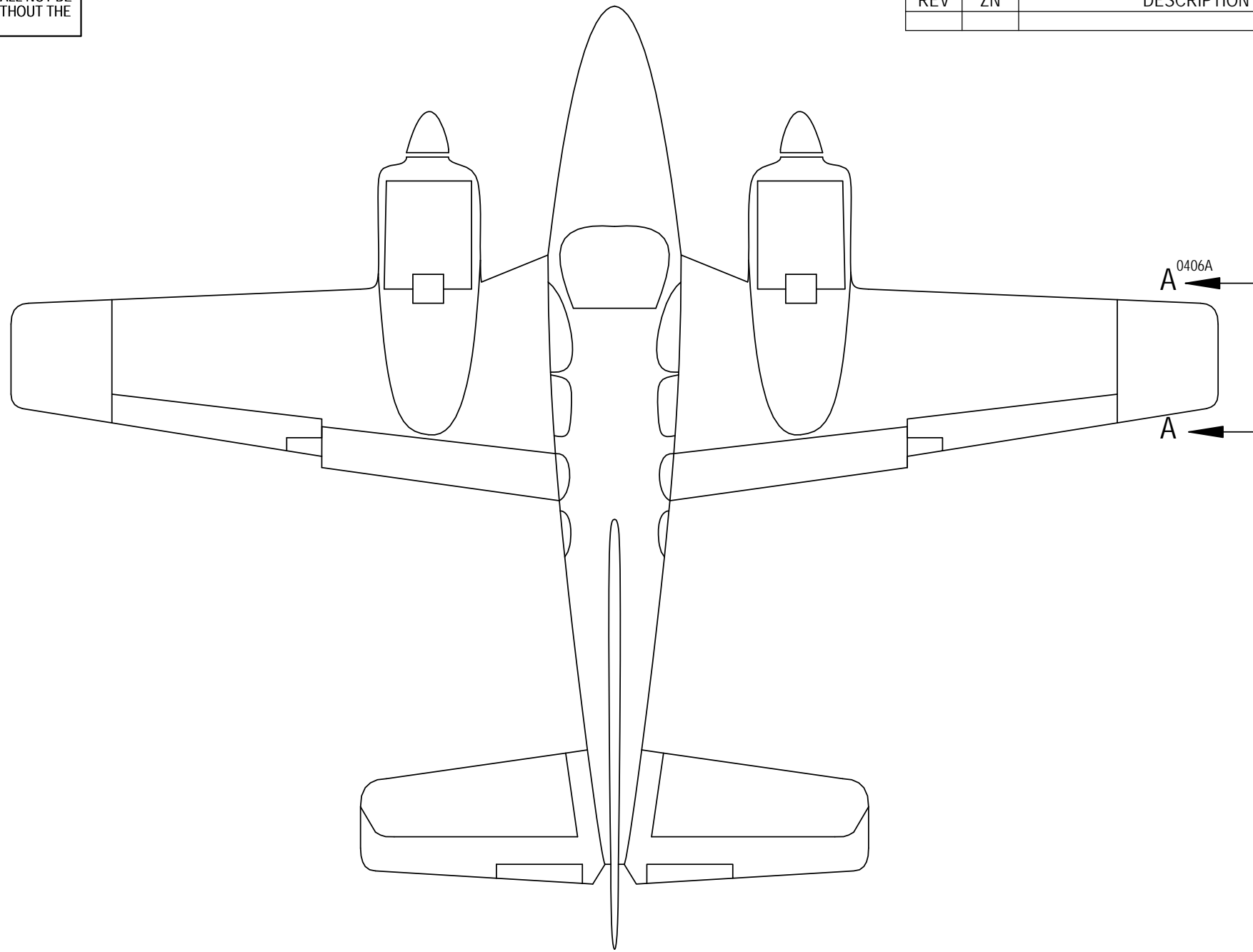


SIZE	CAGE	DWG. NO.	REV
<b>B</b>	<b>6WW92</b>	<b>GAL01-5720-101</b>	<b>IR</b>
SCALE: NONE	SOLIDWORKS DRAWING	CALC WGT	ACT WGT
			SHEET 2 OF 8

8 7 6 5 4 3 2 1

**PROPRIETARY INFORMATION**  
THE INFORMATION HEREIN IS PRIVILEGED AND CONFIDENTIAL AND SHALL NOT BE DISSEMINATED, DUPLICATED, REUSED, OR DISCLOSED IN ANY WAY WITHOUT THE PRIOR WRITTEN PERMISSION OF INNOVIATOR, LLC.

REVISIONS					
REV	ZN	DESCRIPTION	DRAWN	APPROVED	DATE



VIEW LOOKING DOWN  
(ACTUAL AIRCRAFT NOT SHOWN)

- (-001) LH, POSITION/ANTICOLLISION AND RECOGNITION LIGHT PROVISIONS INSTL (OPPOSITE)
- (-002) RH, POSITION/ANTICOLLISION AND RECOGNITION LIGHT PROVISIONS INSTL (SHOWN)
- (-003) LH, POSITION/ANTICOLLISION LIGHT PROVISIONS INSTL (OPPOSITE)
- (-004) RH, POSITION/ANTICOLLISION LIGHT PROVISIONS INSTL (SHOWN)

**INNOVIATOR**  
FLIGHT SCIENCE

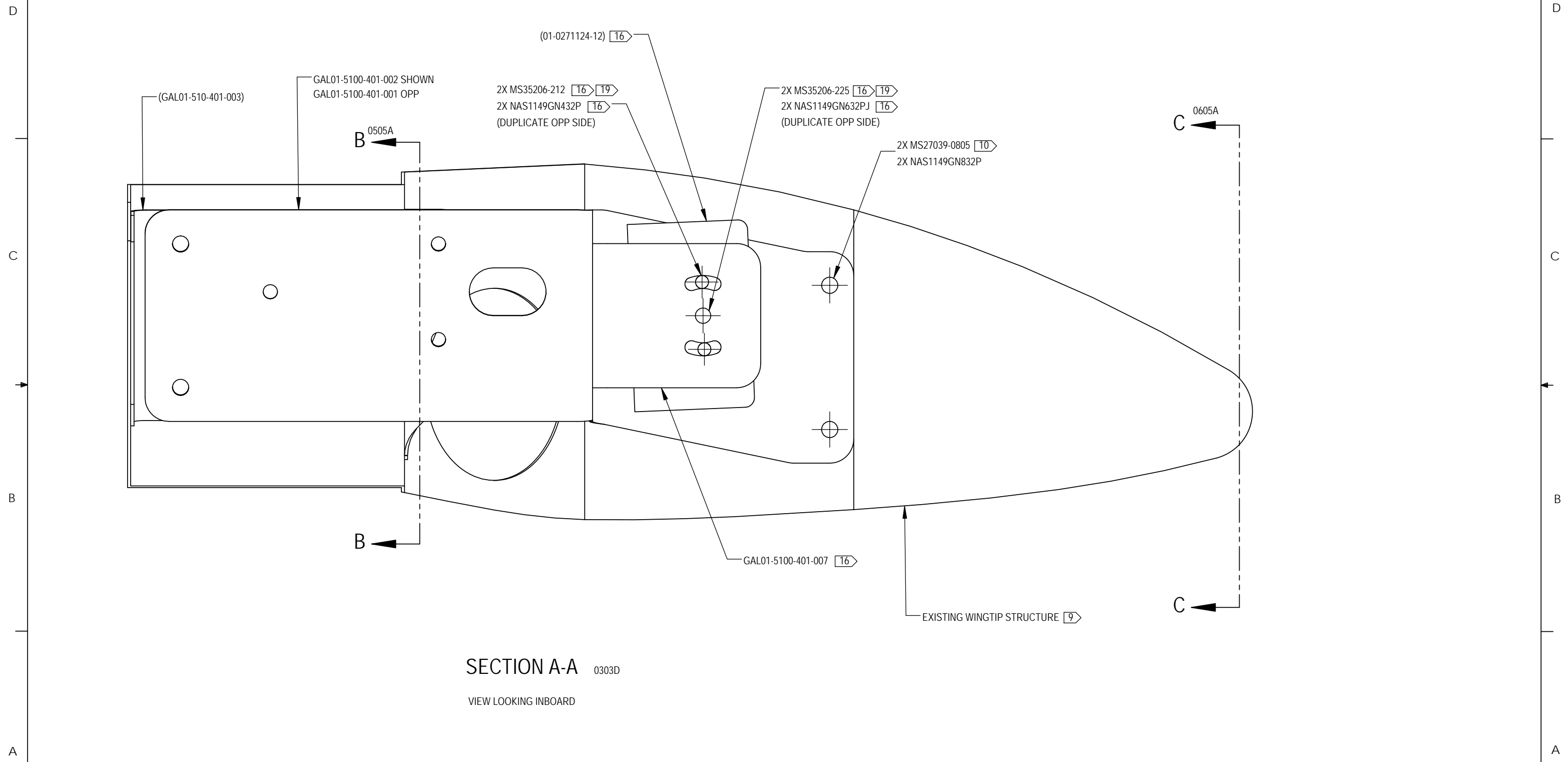
SIZE	CAGE	DWG. NO.	REV
B	6WW92	GAL01-5720-101	IR
SCALE: NONE	SOLIDWORKS DRAWING	CALC WT.	ACT WT.
			SHEET 3 OF 8

8 7 6 5 4 3 2 1

8 7 6 5 4 3 2 1

**PROPRIETARY INFORMATION**  
THE INFORMATION HEREIN IS PRIVILEGED AND CONFIDENTIAL AND SHALL NOT BE DISSEMINATED, DUPLICATED, REUSED, OR DISCLOSED IN ANY WAY WITHOUT THE PRIOR WRITTEN PERMISSION OF INNOVIATOR, LLC.

REVISIONS					
REV	ZN	DESCRIPTION	DRAWN	APPROVED	DATE



**SECTION A-A** 0303D  
VIEW LOOKING INBOARD

**INNOVIATOR**  
FLIGHT SCIENCE

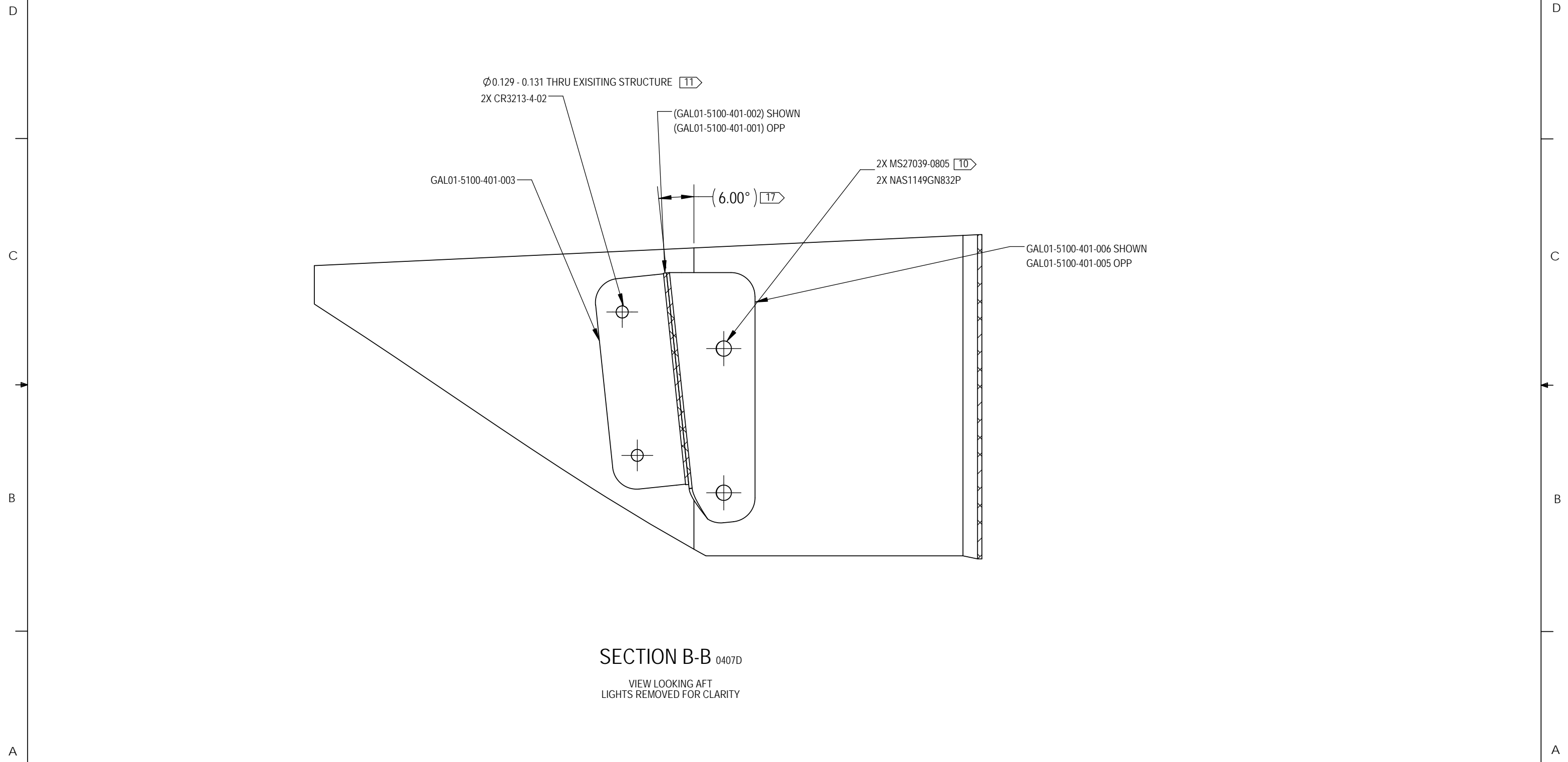
SIZE	CAGE	DWG. NO.	REV
<b>B</b>	<b>6WW92</b>	<b>GAL01-5720-101</b>	<b>IR</b>
SCALE: 1:1	SOLIDWORKS DRAWING	CALC WT.	ACT WT.
			SHEET 4 OF 8

8 7 6 5 4 3 2 1

8 7 6 5 4 3 2 1

**PROPRIETARY INFORMATION**  
THE INFORMATION HEREIN IS PRIVILEGED AND CONFIDENTIAL AND SHALL NOT BE DISSEMINATED, DUPLICATED, REUSED, OR DISCLOSED IN ANY WAY WITHOUT THE PRIOR WRITTEN PERMISSION OF INNOVIATOR, LLC.

REVISIONS					
REV	ZN	DESCRIPTION	DRAWN	APPROVED	DATE



**SECTION B-B 0407D**  
VIEW LOOKING AFT  
LIGHTS REMOVED FOR CLARITY

**INNOVIATOR**  
FLIGHT SCIENCE

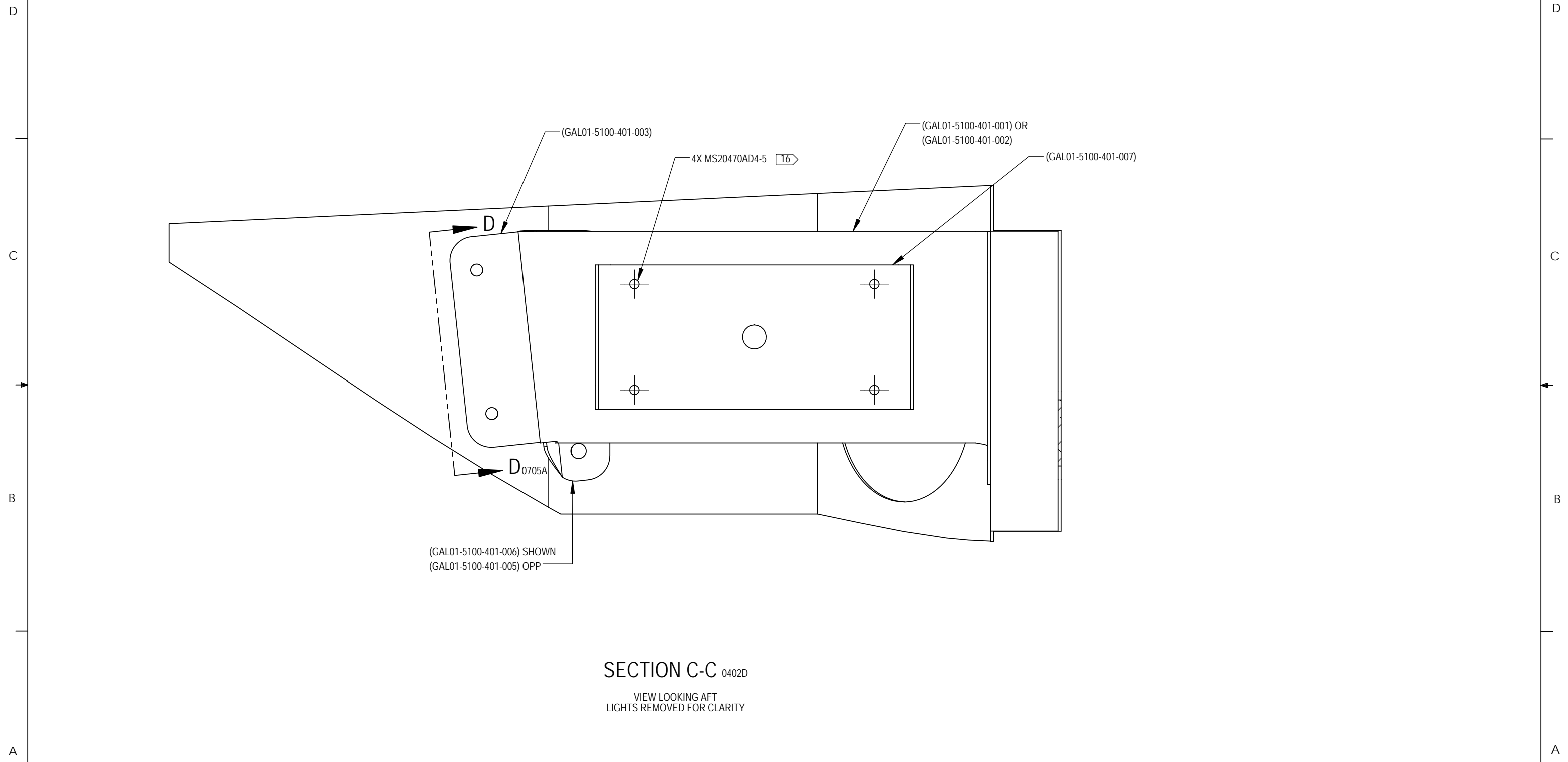
SIZE	CAGE	DWG. NO.	REV
<b>B</b>	<b>6WW92</b>	<b>GAL01-5720-101</b>	<b>IR</b>
SCALE: 1:1	SOLIDWORKS DRAWING	CALC WT.	ACT WT.
			SHEET 5 OF 8

8 7 6 5 4 3 2 1

8 7 6 5 4 3 2 1

**PROPRIETARY INFORMATION**  
THE INFORMATION HEREIN IS PRIVILEGED AND CONFIDENTIAL AND SHALL NOT BE DISSEMINATED, DUPLICATED, REUSED, OR DISCLOSED IN ANY WAY WITHOUT THE PRIOR WRITTEN PERMISSION OF INNOVIATOR, LLC.

REVISIONS					
REV	ZN	DESCRIPTION	DRAWN	APPROVED	DATE



**SECTION C-C 0402D**  
VIEW LOOKING AFT  
LIGHTS REMOVED FOR CLARITY

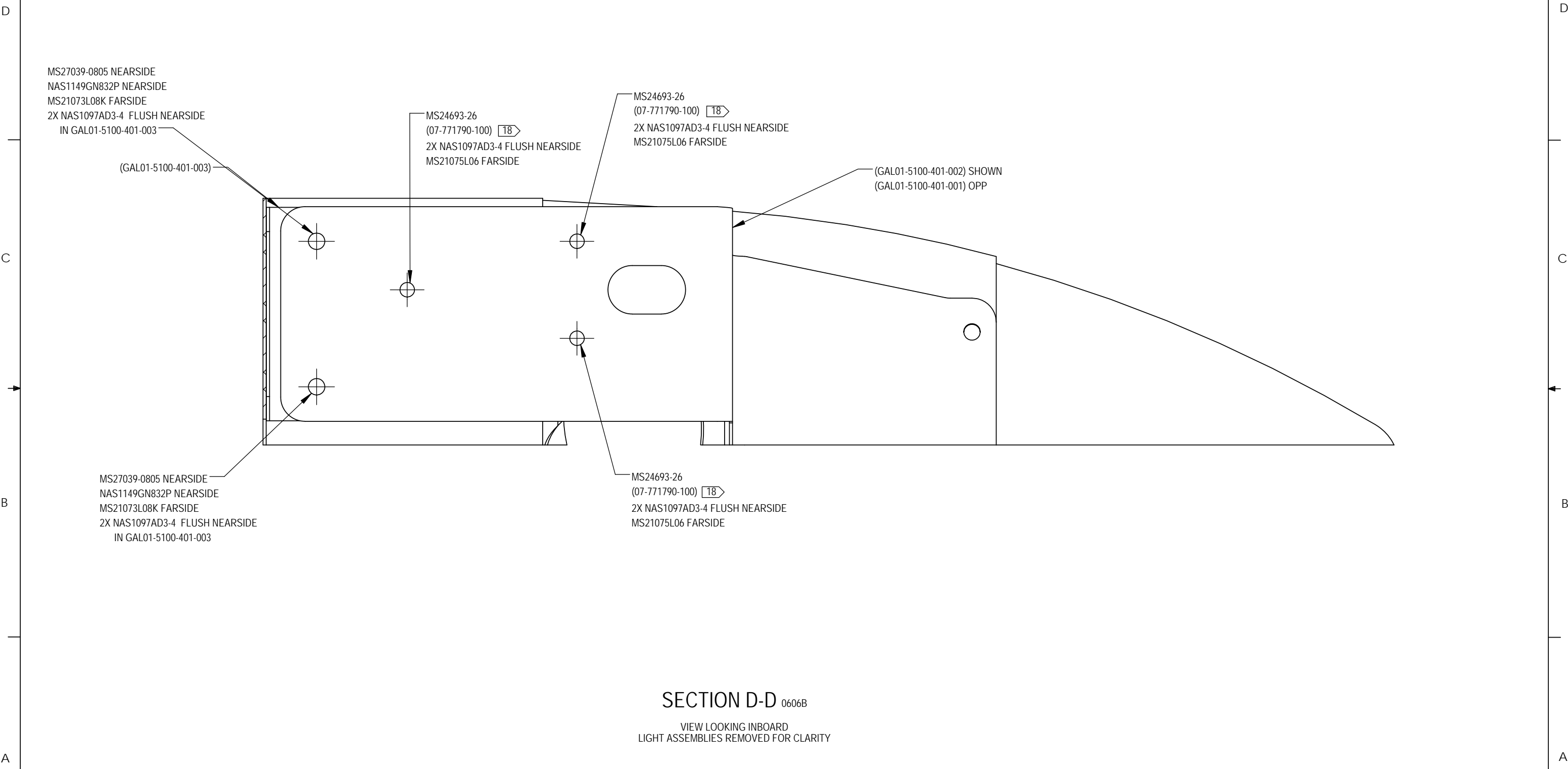
		DWG. NO. GAL01-5720-101		REV IR
SIZE B	CAGE 6WW92	SOLIDWORKS DRAWING	CALC WT. ACT WT.	SHEET 6 OF 8

8 7 6 5 4 3 2 1

8 7 6 5 4 3 2 1

**PROPRIETARY INFORMATION**  
 THE INFORMATION HEREIN IS PRIVILEGED AND CONFIDENTIAL AND SHALL NOT BE DISSEMINATED, DUPLICATED, REUSED, OR DISCLOSED IN ANY WAY WITHOUT THE PRIOR WRITTEN PERMISSION OF INNOVIATOR, LLC.

REVISIONS					
REV	ZN	DESCRIPTION	DRAWN	APPROVED	DATE



MS27039-0805 NEARSIDE  
 NAS1149GN832P NEARSIDE  
 MS21073L08K FAR SIDE  
 2X NAS1097AD3-4 FLUSH NEARSIDE  
 IN GAL01-5100-401-003

(GAL01-5100-401-003)

MS24693-26  
 (07-771790-100)  $\square$ 18  
 2X NAS1097AD3-4 FLUSH NEARSIDE  
 MS21075L06 FAR SIDE

MS24693-26  
 (07-771790-100)  $\square$ 18  
 2X NAS1097AD3-4 FLUSH NEARSIDE  
 MS21075L06 FAR SIDE


(GAL01-5100-401-002) SHOWN  
 (GAL01-5100-401-001) OPP

MS27039-0805 NEARSIDE  
 NAS1149GN832P NEARSIDE  
 MS21073L08K FAR SIDE  
 2X NAS1097AD3-4 FLUSH NEARSIDE  
 IN GAL01-5100-401-003

MS24693-26  
 (07-771790-100)  $\square$ 18  
 2X NAS1097AD3-4 FLUSH NEARSIDE  
 MS21075L06 FAR SIDE

**SECTION D-D** 0606B

VIEW LOOKING INBOARD  
 LIGHT ASSEMBLIES REMOVED FOR CLARITY

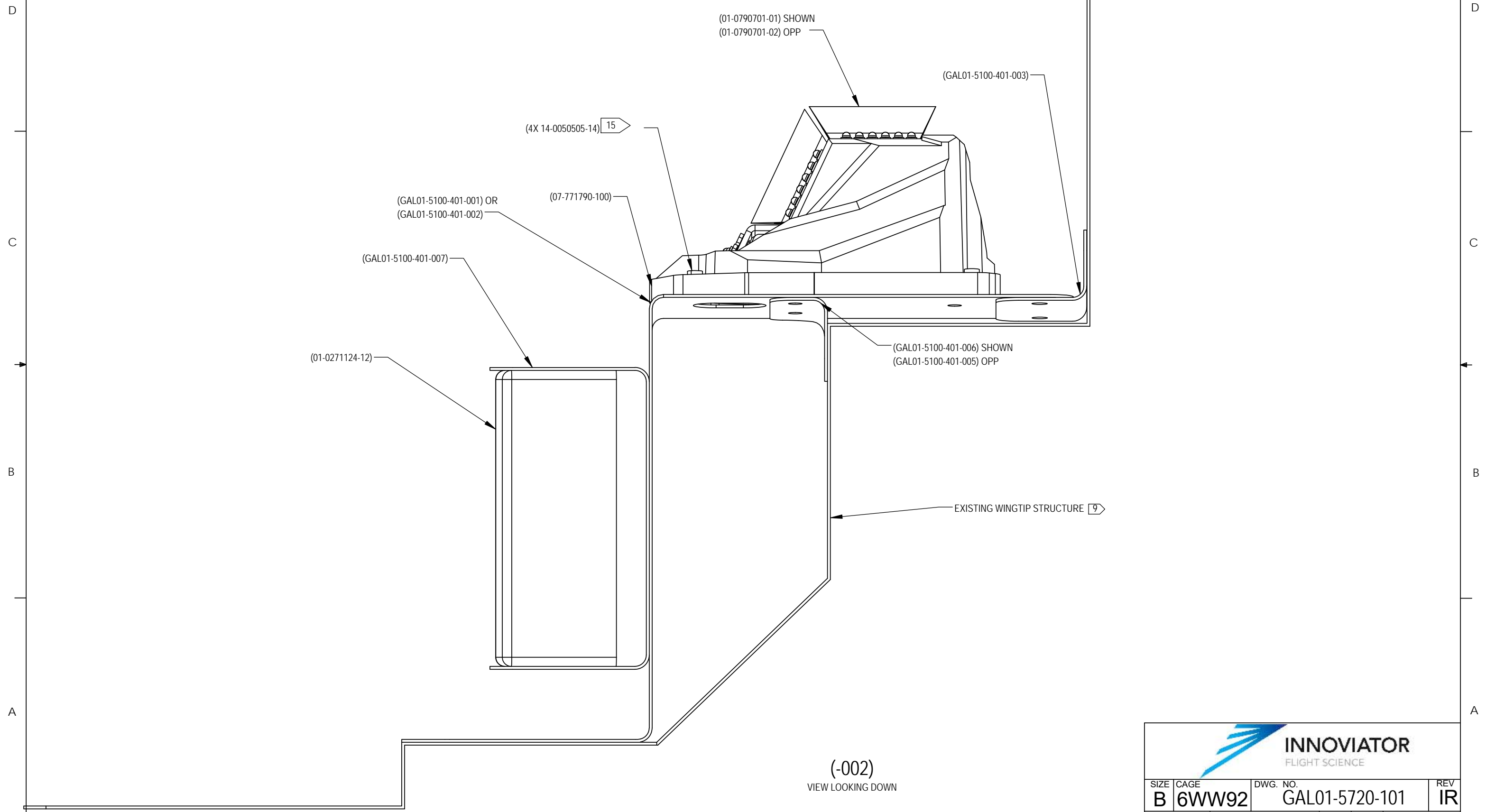
			
SIZE	CAGE	DWG. NO.	REV
B	6WW92	GAL01-5720-101	IR
SCALE: 1:1	SOLIDWORKS DRAWING	CALC WGT.	ACT WGT.
		SHEET 7 OF 8	

8 7 6 5 4 3 2 1

8 7 6 5 4 3 2 1

**PROPRIETARY INFORMATION**  
THE INFORMATION HEREIN IS PRIVILEGED AND CONFIDENTIAL AND SHALL NOT BE DISSEMINATED, DUPLICATED, REUSED, OR DISCLOSED IN ANY WAY WITHOUT THE PRIOR WRITTEN PERMISSION OF INNOVIATOR, LLC.

REVISIONS					
REV	ZN	DESCRIPTION	DRAWN	APPROVED	DATE



D  
C  
B  
A

D  
C  
B  
A

8 7 6 5 4 3 2 1

**INNOVIATOR**  
FLIGHT SCIENCE

SIZE	CAGE	DWG. NO.	REV
B	6WW92	GAL01-5720-101	IR
SCALE: 1:1	SOLIDWORKS DRAWING	CALC WGT.	ACT WGT.
			SHEET 8 OF 8